



FINURA

# MARKET COMMENTARY

## APRIL 2022

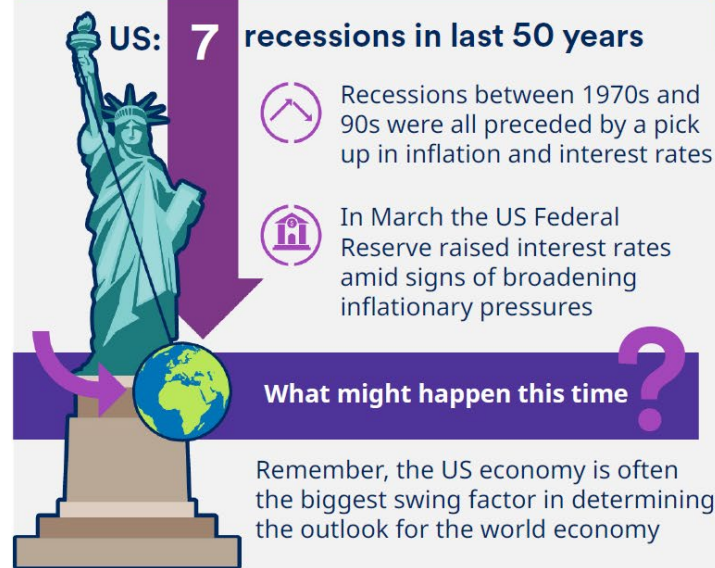


Pension  
**TRANSFER**  
Gold Standard

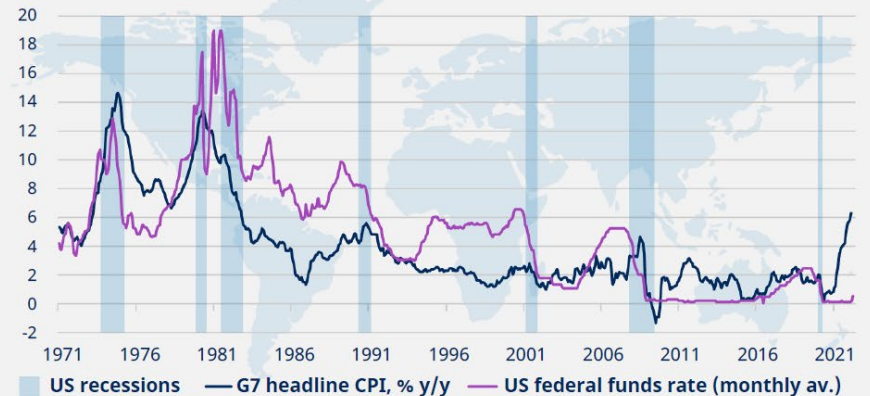
# INFOGRAPHIC: THE GLOBAL ECONOMY

## Will the world economy avoid an inflationary bust?

[Read article here](#) >



### Inflation, interest rates, recessions



Note: US recession defined by the National Bureau of Economic Research (NBER), inflation based on consumer prices indices (CPI) of G7 (Group of Seven) largest "advanced" nations, to track price changes facing the end consumers of good and services in these economies. The "US federal funds rate" is the main policy rate of the Federal Reserve. Source: Refinitiv, Schroders Economics Group, 4 April 2022.

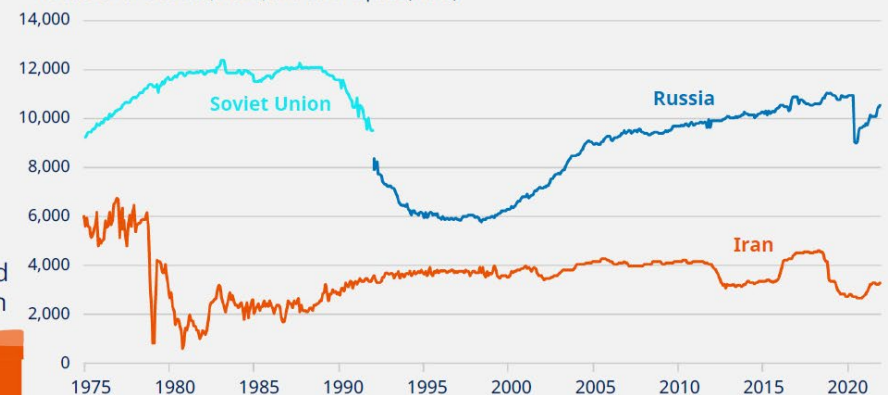
## Is Russia the new Iran as a result of sanctions?

[Read article here](#) >



### Pre-revolution Iran was a similarly dominant oil exporter to Russia today

Production of crude oil, NGPL, and other liquids (Mb/d)



Note: NGPL, or natural gas plant liquids, are those hydrocarbons in natural gas that are separated as liquids at natural gas processing. Source: US Energy Information Administration, Schroders Economics Group, as at November 2021.

## Sunak looks to ease pressure on squeezed UK consumer

[Read article here](#) 



Source: [Schroders as at April 2022.](#)





# MULTI-ASSET INVESTMENT VIEWS

KEY

▲ Up from last month ▼ Down from last month

● Positive ● Positive/Neutral ● Neutral ● Neutral/Negative ● Negative

	Category	View	Comments
Main Asset Classes	Equities	●	The Federal Reserve (Fed) has begun its much anticipated hiking cycle indicating that it is also looking to start withdrawing liquidity from the system (as liquidity is withdrawn, or liquidity conditions tighten, the availability of funds becomes less ample). We remain negative in an environment of tightening liquidity and peaking growth momentum.
	Government Bonds	●▲	We have upgraded to neutral as although inflation and growth data remain elevated, momentum is slowing and Omicron concerns are fading.
	Commodities	●	The increased geopolitical risks stemming from Russia's invasion of Ukraine combined with the imbalance between supply and demand are likely to remain supportive.
	Credit	●	We continue with an overall neutral rating as our outlook on credit remains cautious given stagflationary concerns, stagflation being the combination of slowing growth and accelerating inflation. Company fundamentals, nonetheless, remain resilient.
Equities	US	●▼	Valuations in the US suggest that this is a market that is particularly vulnerable to the withdrawal of liquidity and the widening of the "equity risk premium". The equity risk premium is the return from equities in excess of that from "riskless" asset such as cash.
	UK	●	The defensive and commodity biases in the FTSE index mean that the UK market should better withstand the geopolitical headwinds compared to other markets.
	Europe	●	The region is closest to the Russia/Ukraine conflict, which remains volatile. Additionally, it is subject to potential uncertainty from the French elections.
	Japan	●	We remain neutral as the market is in some senses distanced from the conflict in Europe. The effect of imported inflation, however, remains to be seen.
	Global Emerging Markets <sup>1</sup>	●	We remain neutral as valuations are attractive but an improvement in global conditions are a required trigger for any meaningful upside.
	Asia ex-Japan & China	●	Lockdowns and supply bottlenecks continue to negatively impact trade flows, however Chinese policymakers have recently shifted their focus to support growth via easing of monetary policy. Monetary policy covers measures taken by central banks designed to regulate economic growth and include changes in interest rates.
	EM Asia ex China	●▼	The Korean elections are now over but we believe that other regions in the emerging markets universe appear more attractive.
Government Bonds	US	●	We maintain our negative stance as even though bond markets have moved a long way, we believe we are still only at the beginning of the rate hiking cycle. Sentiment continues to point towards tighter monetary policy.
	UK	●	We are neutral as although gilt yields have moved significantly in recent weeks, we believe too many rate hikes are currently priced in and that the risk of a recession is not imminent.
	Germany	●	The European Central Bank (ECB) has U-turned on a number of statements this year, and has removed its prior guarantee to not raise rates in 2022.
	Japan	●	The market continues to offer negative yields, which provides poor value in a portfolio context. The Bank of Japan is not expected to intervene anytime soon.
	US Inflation Linked	●	We remain negative as uncertainty from the Russia/Ukraine crisis appears to have peaked and now the Fed's top priority is to contain inflation.
	Emerging Markets Local	●	Our view is unchanged as the economic environment remains challenging with stagflationary as well as recessionary risks mounting.

<sup>1</sup> Global Emerging Markets includes Central and Eastern Europe, Latin America and Asia.

	Category	View	Comments
Investment Grade Credit	US	●	Unlike its counterpart in Europe, we think the Fed is unlikely to support the credit market any time soon.
	Europe	●	We believe that the ECB will continue to keep all options on the table with regards to policies to support the credit market and so we retain our positive score.
	Emerging Markets USD	● ▼	We have downgraded to neutral due to the rapid compression in credit spreads seen in emerging market investment grade bonds. The credit spread is the margin that a company issuing a bond has to pay an investor in excess of government yields and is a measure of how risky the market perceives the borrower to be.
High Yield Bonds (Non-IG)	US	●	We expect credit spreads to widen further in a market where subdued price action year to date looks anomalous.
	Europe	● ▲	Our base case is that the tension in Ukraine is now chronic. We have therefore upgraded our view to positive due to the relative stabilisation.
Commodities	Energy	● ▼	While the supply of oil has tightened further since Russia's invasion of Ukraine, Chinese authorities have imposed lockdowns following a fresh surge in Covid-19 cases. The risks of a prolonged lockdown is likely to dampen the demand for energy.
	Gold	● ▲	Following the Fed's decision to increase interest rates, we are one step closer to peak Fed hawkishness. Monetary policymakers are often described as hawkish when expressing concerns about limiting inflation. In addition, rising geopolitical and inflationary concerns will likely benefit gold.
	Industrial Metals	●	Demand outside of China appears to be recovering strongly as economic activity normalises. The policy stance in China has also turned more supportive.
	Agriculture	●	Ukraine and Russia are vital to the global food supply chain. The crisis is adding pressure to already stretched global supplies, pushing prices to higher levels.
Currencies	US \$	●	We have retained our positive score due to the US dollar's safe haven status and the increasing divergence in monetary policy between the Fed and the ECB.
	UK £	●	The Monetary Policy Committee delivered a rate hike with surprisingly hawkish comments but the hiking cycle may be short-lived if downside risks to growth materialise.
	EU €	●	Inflation risks in the eurozone have increased due to the rise in energy prices and slowing growth momentum. We have therefore kept our negative score.
	CNH ¥	●	We expect the slowdown in exports, renewed Covid-19 related lockdowns and interest rate cuts to lead to a depreciation in the renminbi (offshore).
	JAP ¥	●	We have retained our neutral score based on the safe haven status of the currency and the attractive valuations. A slower US interest rate cycle could also strengthen the yen.
	Swiss F	● ▼	In terms of safe haven currencies, we have a preference for the US dollar over the Swiss franc as we have more conviction in the Fed's path to normalisation. Normalisation refers to interest rates being raised back to where they broadly were prior to Covid-19 and the phasing out of other monetary policies implemented during the pandemic.





# MARKETS REVIEW

**A look back at markets in April, which saw a shift in interest rate expectations with markets now expecting faster rate rises.**

## THE MONTH IN SUMMARY

Equity markets saw further falls in April. Global shares were hit by the ongoing war in Ukraine, lockdowns in China, continued supply chain disruptions, and expectations that US interest rates could rise swiftly. US shares were sharply lower after disappointing updates from some previously fast-growing companies. Bond yields continued to rise (meaning prices moved lower) as markets anticipated significant interest rate hikes.

## THE US

US equities fell sharply in April. Economic data showed signs of weakening while inflationary pressures continued to prompt the Federal Reserve (Fed) into a more aggressive path of interest rate hikes. Several high-profile US tech firms were notably weaker on supply-chain concerns and lacklustre results.

Inflation – as measured by headline CPI - increased 1.2% over the month of March, a sharp pick-up from February. This took the annual rate of inflation to 8.5% from 7.9%, its highest since December 1981. Higher fuel prices contributed significantly to the elevated number.

The Fed signalled a 50 basis point hike would take place in May in a step up in the central bank's inflationary countermeasures. Meanwhile, industrial activity was broadly weaker, consumer confidence down, and initial data showed a contraction of GDP in Q1.

Weakness was widespread. Consumer staples were more resilient, while most other sectors declined. Consumer discretionary companies, unsurprisingly given the damage to consumer confidence, were amongst the weakest over the month. Car manufacturers were especially hard-hit. Communication services also declined. Netflix, notably, fell sharply after its net loss of subscribers in Q1, the first quarterly decline in users since 2007.

## EUROZONE

April saw further declines for eurozone equities as the war in Ukraine continued and there was no let up in inflationary pressures. Annual eurozone inflation reached 7.5% in April, up from 7.4% in March. Russia halted gas supplies to Poland and Bulgaria after the two countries refused to comply with a decree from Russia that payment must be made in roubles.

The best performing sectors included energy, amid ongoing strong demand, and communication services, where telecoms stocks fared well given their defensive profile. Information technology, consumer discretionary and industrials were the weakest sectors. Companies in these sectors tend to be among the most affected by supply chain disruptions and concerns over consumer confidence.

The eurozone economy grew by 0.2% quarter-on-quarter on Q1 and the unemployment rate dipped in February to 6.8%, from 6.9% in January. Forward-looking indicators painted a mixed picture: the services purchasing managers index (PMI) hit an eight-month high amid an upturn in tourism, but manufacturing PMI reached a 22-month low. (The PMI indices, produced by IHS Markit, are based on survey data from companies in the manufacturing and services sectors.)



As expected, Emmanuel Macron won the French presidential election.

## UK

April was another marginally positive month for UK equities. The FTSE 100 index remains one of the few key national benchmarks in positive territory for 2022 in the year to date (local currency terms).

Typically defensive groups provided most of the impetus for the market, notably the pharmaceutical and the consumer staple sectors. Many of these companies are also big dollar earners and received additional support from the strength of the US currency, especially versus a weak sterling. Dollar strength also benefited the energy companies while utilities were in demand given their expected resilience to stagflation, being the combination of slowing growth and accelerating inflation.

Sterling performed poorly amid fears around the domestic economic outlook. Official data showed the UK economy slowed more sharply than expected in February, when monthly GDP rose by 0.1%, from 0.8% in January. Meanwhile, the annual rate of UK consumer inflation climbed to 7.0% in March from 6.2% in February (consumer price index), its highest since March 1992.

The same fears around the domestic outlook also weighed on domestically focused sectors and UK small and mid cap equities underperformed as a result. Consumer-facing companies in particular struggled in the face of cost of living concerns, which have raised questions around the ability of some companies to pass on their own rising costs.

## JAPAN

After initial weakness, the Japanese stock market drifted sideways to end April 2.4% lower. The yen again weakened sharply against the US dollar in April, breaching the 130 level for the first time in 20 years.

Aside from the ongoing human tragedy unfolding in Ukraine, Japan's equity market in April was primarily driven by news flow on monetary policy and currency markets. Comments from the US Federal Reserve pointed to a widening interest rate differential with Japan materialising earlier than expected. This view was reinforced by the results of the Bank of Japan's (BoJ) own policy meeting on 18 April, confirming no change in policy and the maintenance of the existing target of +/- 25bps for the 10-year bond yield.

However, there was some surprise in the degree of commitment to this target shown by BoJ Governor Kuroda. Until the last two months these operations had been extremely rare, and generally only deployed at specific moments of significant market stress.

However, Mr Kuroda stated that these fixed-rate operations will be conducted every day throughout May, virtually guaranteeing no rise in bond yields, which quickly pushed the yen down though the psychological 130 level against the US dollar.

On the corporate front, corporate results announcements began in late April for the fiscal year ended in March. The bulk of companies, however, will report in May, after the Golden Week holiday period.





## ASIA (EX JAPAN)

Asia ex Japan equities were lower in April as China struggled to contain its worst outbreak of Covid-19. This prompted fears that the subsequent economic stoppages could have a wider impact on the global economy and exacerbate the global supply chain shortages. Shanghai, China's largest city and home to almost 25 million people, has been in lockdown since the end of March when cases of the Omicron variant started spiking.

Expectations of higher interest rates and the ongoing Russian invasion of Ukraine also weakened investor sentiment during a volatile trading month.

Taiwan was the worst-performing index market during April, with major electronics manufacturers and chip makers slumping due to supply chain disruptions amid the lockdowns in Shanghai and neighbouring cities. Share prices were also sharply lower in the Philippines, South Korea and Singapore in April, while share price declines in China and Hong Kong were less muted.

Indonesia was the only market in the index to end the month in positive territory after ratings agency S&P upgraded the country's outlook to stable from negative, citing the improvement in Indonesia's fiscal position.

## EMERGING MARKETS

Emerging market (EM) equities were firmly down in April, amid a pick-up in risk aversion globally. Increasingly hawkish sentiment from the US Federal Reserve, US dollar strength, concern over the impact of Covid lockdowns in China, and Russia's ongoing war in Ukraine all weighed on the outlook. Poland, which saw its gas supply from Russia cut off, was the weakest market in the

index, while neighbouring Hungary also lagged.

Industrial metals sold off amid increased uncertainty over the demand outlook from China, which was negative for net exporters Peru, Brazil and South Africa. In Peru, protests in response to soaring food and energy inflation, also weighed on the outlook. Mexico underperformed as the cyclical outlook deteriorated and policy concerns returned, while a weaker outlook for global trade was negative for Taiwan and South Korea.

By contrast, Turkey generated a positive return and was the best-performing index market. Net energy exporters Saudi Arabia, Qatar and Kuwait also finished in positive territory. China outperformed but posted a negative return as concern over the growth outlook increased and lockdowns implied supply chain disruption may be prolonged. This was despite some modest monetary easing during the month.

## GLOBAL BONDS

Bond yields continued to rise in April, resulting in further negative returns (yields and prices move in opposite directions), amid continued high inflation and expectations of significant interest rate hikes.

Investors continued to weigh up the uncertainty of the war in Ukraine and the resulting disruption to supply chains. Concerns over the global growth outlook have begun to mount too, with China maintaining stringent lockdowns to tackle Covid-19.

US consumer price inflation accelerated to 8.5% year-on-year in March though the core personal consumption expenditure index fell marginally to an annualised 5.2%, from 5.3%.



The Fed maintained a hawkish stance. Policy minutes indicated it is considering a relatively quick reduction in its balance sheet. Later in the month, Fed Chair Jay Powell signalled a potential 0.5% rate increase in May.

The US 10-year Treasury yield increased from 2.35% to 2.94% and the two-year from 2.33% to 2.73%. The two to 10-year yield curve (two-year minus 10-year yield) inverted briefly early in the month.

The UK 10-year yield rose from 1.61% to 1.91% and the two-year increased from 1.36% to 1.61%. Bank of England (BoE) Governor Andrew Bailey acknowledged UK policymakers are walking a “tightrope” between inflation and the danger of the shock to household incomes that higher interest rates could represent.

In Europe, the German 10-year yield rose from 0.55% to 0.94% and the Italian 10-year yield rose from 2.04% to 2.77%. Europe saw continued surging inflation and speculation around monetary tightening. European Central Bank President Christine Lagarde repeated the message that asset purchases will end early in Q3 and rates could rise this year, but the governing council will maintain “optionality”.

Corporate bonds saw negative total returns and underperformed government bonds. High yield saw the more significant spread widening though spreads remained below the highs seen earlier this year. (Investment grade bonds are the highest quality bonds as determined by a credit rating agency; high yield bonds are more speculative, with a credit rating below investment grade).

Emerging market (EM) bonds saw negative returns too, particularly sovereign debt, while corporate credit was more

resilient. EM currencies weakened as the US dollar performed strongly, particularly in Latin America and central and eastern Europe. The Chinese yuan also declined notably.

Convertible bonds re-found some of their traditional protective qualities in April. The Refinitiv Global Focus convertible bond index shed -4.1% in US dollar terms, implying downside protection of c.50% compared to the MSCI World’s fall of c.8%. New issuance of convertible bonds remains lacklustre with a volume of just over US\$10 billion since the start of the year. This compares to a volume of more than US\$60 billion for the same period last year.

## COMMODITIES

The S&P GSCI Index achieved a positive return in April as higher prices in the agriculture and energy components offset weaker prices for industrial metals, livestock and precious metals. Energy was the best performing component of the index during the month amid rising demand, as the global economy normalises after the Covid-19 crisis, and supply curbs due to geopolitical issues such as Russia’s ongoing invasion of Ukraine.

Within the agriculture component, prices for corn and wheat were sharply higher on continuing fears that the ongoing war between Russia and Ukraine could hinder supplies (Russia and Ukraine account for around 30% of global wheat exports).

In industrial metals, the price of aluminium was sharply lower in April. Copper and lead also saw significant price declines in the month, while price falls for nickel and zinc were more muted. Within precious metals, the price of silver was significantly lower in April, while the decline in the price of gold was less pronounced.



# TOTAL RETURNS (NET) % – TO END APRIL 2022

	1 MONTH			12 MONTHS		
<b>Equities</b>	<b>USD</b>	<b>EUR</b>	<b>GBP</b>	<b>USD</b>	<b>EUR</b>	<b>GBP</b>
MSCI World	-8.3	-3.3	-3.8	-3.5	10.1	6.4
MSCI World Value	-5.0	0.2	-0.4	1.9	16.2	12.3
MSCI World Growth	-11.9	-7.1	-7.6	-9.5	3.3	-0.2
MSCI World Smaller Companies	-7.8	-2.8	-3.3	-12.2	0.2	-3.2
MSCI Emerging Markets	-5.6	-0.4	-1.0	-18.3	-6.8	-9.9
MSCI AC Asia ex Japan	-5.2	0.0	-0.5	-21.0	-9.9	-12.9
S&P500	-8.7	-3.7	-4.3	0.2	14.4	10.5
MSCI EMU	-7.0	-1.9	-2.5	-14.3	-2.2	-5.5
FTSE Europe ex UK	-6.3	-1.2	-1.8	-9.2	3.6	0.1
FTSE All-Share	-4.4	0.9	0.3	-1.4	12.5	8.7
TOPIX*	-8.6	-3.6	-4.1	-13.6	-1.4	-4.7

	1 MONTH			12 MONTHS		
<b>Government Bonds</b>	<b>USD</b>	<b>EUR</b>	<b>GBP</b>	<b>USD</b>	<b>EUR</b>	<b>GBP</b>
JPM GBI US All Mats	-3.2	2.1	1.5	-7.0	6.1	2.5
JPM GBI UK All Mats	-7.4	-2.4	-2.9	-17.1	-5.4	-8.5
JPM GBI Japan All Mats**	-6.6	-1.5	-2.0	-17.2	-5.5	-8.7
JPM GBI Germany All Traded	-8.1	-3.0	-3.6	-18.8	-7.4	-10.5
<b>Corporate Bonds</b>	<b>USD</b>	<b>EUR</b>	<b>GBP</b>	<b>USD</b>	<b>EUR</b>	<b>GBP</b>
BofA ML Global Broad Market Corporate	-5.7	-0.5	-1.1	-12.8	-0.5	-3.9
BofA ML US Corporate Master	-5.0	0.2	-0.4	-10.1	2.5	-0.9
BofA ML EMU Corporate ex T1 (5-10Y)	-8.7	-3.7	-4.2	-21.8	-10.8	-13.8
BofA ML £ Non-Gilts	-7.3	-2.2	-2.7	-16.8	-5.1	-8.3
<b>Non-investment Grade Bonds</b>	<b>USD</b>	<b>EUR</b>	<b>GBP</b>	<b>USD</b>	<b>EUR</b>	<b>GBP</b>
BofA ML Global High Yield	-4.4	0.8	0.3	-10.2	2.5	-1.0
BofA ML Euro High Yield	-5.2	0.0	-0.6	-12.4	0.0	-3.4

Source: Thomson Reuters DataStream.  
 Local currency returns in April 2022: \*-2.4%, \*\*-0.3%.  
 Past performance is not a guide to future performance and may not be repeated.

**Source:** [Schroders, April 2022](#): The value of investments and the income from them may go down as well as up and investors may not get back the amounts originally invested. Past performance mentioned is not a guide to future performance and may not be repeated. The sectors, securities, regions and countries shown are for illustrative purposes only and are not to be considered a recommendation to buy or sell.

**Important Information:** This communication is marketing material. The views and opinions contained herein are those of the named author(s) on this page, and may not necessarily represent views expressed or reflected in other Schroders communications, strategies or funds. This document is intended to be for information purposes only and it is not intended as promotional material in any respect. The material is not intended as an offer or solicitation for the purchase or sale of any financial instrument. The material is not intended to provide, and should not be relied on for, accounting, legal or tax advice, or investment recommendations. Information herein is believed to be reliable but Schroder Investment Management Ltd (Schroders) does not warrant its completeness or accuracy. The data has been sourced by Schroders and should be independently verified before further publication or use. No responsibility can be accepted for error of fact or opinion. This does not exclude or restrict any duty or liability that Schroders has to its customers under the Financial Services and Markets Act 2000 (as amended from time to time) or any other regulatory system. Reliance should not be placed on the views and information in the document when taking individual investment and/or strategic decisions. Past Performance is not a guide to future performance. The value of investments and the income from them may go down as well as up and investors may not get back the amounts originally invested. Exchange rate changes may cause the value of any overseas investments to rise or fall. Any sectors, securities, regions or countries shown above are for illustrative purposes only and are not to be considered a recommendation to buy or sell. The forecasts included should not be relied upon, are not guaranteed and are provided only as at the date of issue. Our forecasts are based on our own assumptions which may change. Forecasts and assumptions may be affected by external economic or other factors. Issued by Schroder Unit Trusts Limited, 31 Gresham Street, London, EC2V 7QA. Registered Number 4191730 England. Authorised and regulated by the Financial Conduct Authority.







FINURA

5th Floor, 20 Old Bailey, London EC4M 7AN

T: +44 (0)20 8057 8004 E: [hello@finura.co.uk](mailto:hello@finura.co.uk) W: [finura.co.uk](http://finura.co.uk)

Finura Partners is an Appointed Representative of Evolution Wealth Network Limited who are authorised and regulated by the Financial Conduct Authority and based at Holmwood House, Broadlands Business Campus, Langhurstwood Road, Horsham, West Sussex, RH12 4QP.

Finura Partners Limited are registered in England under Companies House number 09560937, 15 Bowling Green Lane, London, England, EC1R 0BD.